

UNITED STATES
PATENT AND TRADEMARK OFFICE



Provision and use of IP data at the USPTO

Nelson Yang



Why is data important?

Awareness

Consistency

Innovation

uspto

Data at the USPTO

Filing data

- Patent Center

Patent family data

- Global Dossier

Bulk data sets and services

Patent Center

Patent Center

New and unified system to replace EFS-Web and PAIR

Single interface

- Features single interface for filing and managing patent applications

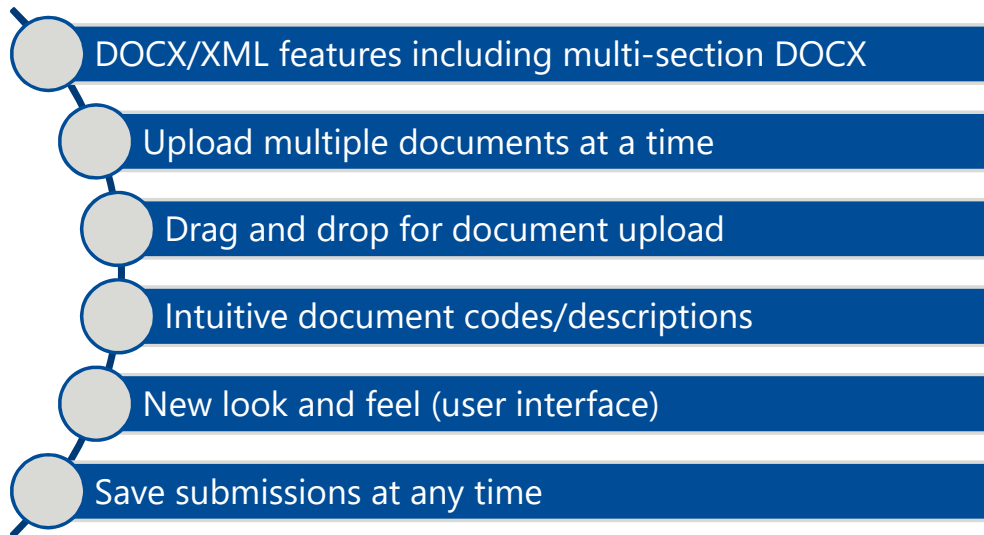
Recent technology

- Integrates recent technology
- Allows for enhanced system operations
- Enables increased functionality

Authentication

- Use your USPTO.gov account that also allows access to EFS-Web and Private PAIR
- Allows role based access—Patent Practitioner, Practitioner Support, Independent Inventor, and guest access.

Patent Center overview



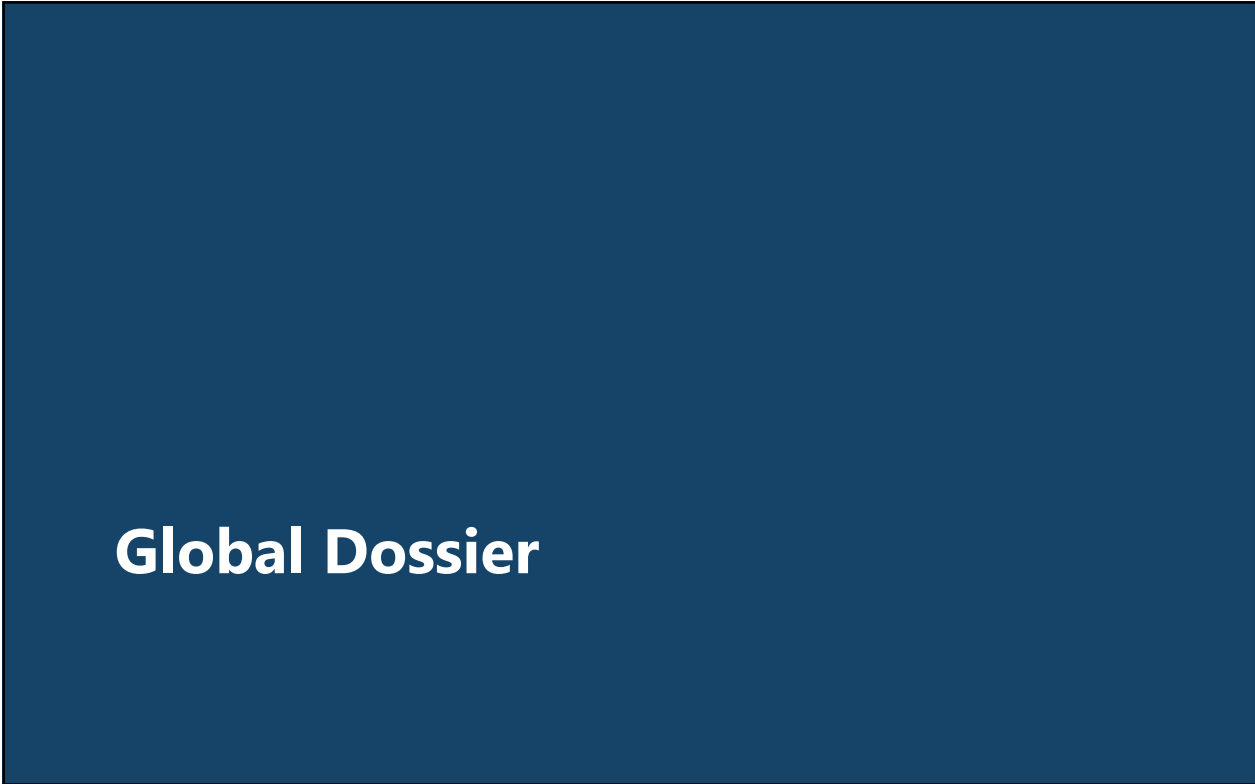
7

DOCX in Patent Center— benefits and features

- Safe and stable for creating, authoring, and processing IP documents
- Drag and drop for document upload
- Requirement to convert DOCX into PDF for filing is eliminated
- Detects and splits specification, claims, abstract found in a single file (i.e., multi-section)
- Automated document code assignments saves initial processing time
- Provides content-based validations pre-submission, saving examination, and initial processing time
 - Specification paragraph numbering detection
 - Independent and dependent claim count
 - Duplicate or missing claim number detection
 - Improper multiple claim dependency
 - Abstract word count
- Secure: automatic metadata detection and scrubbing

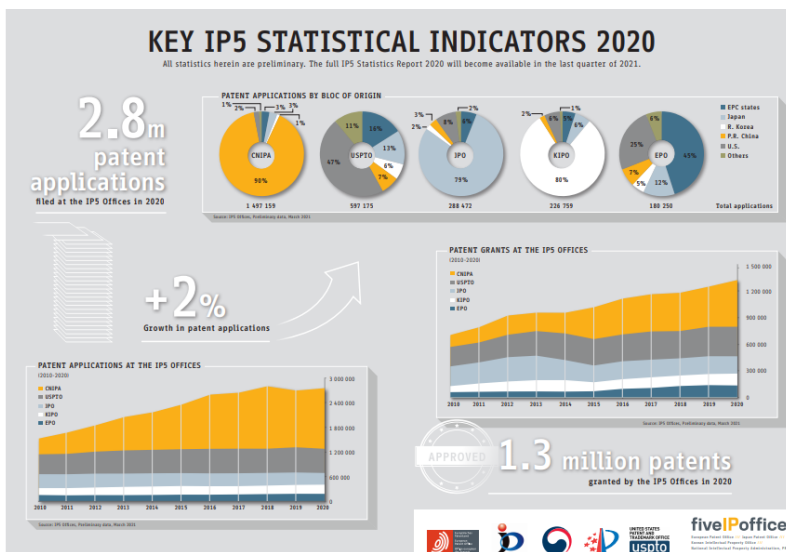


8



Global Dossier

The Importance of Global Worksharing



Source: www.fiveipoffices.org/statistics.html, accessed June 29, 2021.

Benefits of Global Dossier

Consolidated access to patent family data

- View an application's patent family and counterpart prosecution histories from multiple IPOs in real-time

View the most relevant art in minutes

- Citation List allows you to see all the art cited in the patent family, with the most frequently cited art listed first

Office Action translations

- Only location to find real-time English machine translations of Chinese, Korean, and Japanese Office Actions



Patent family view

Office #	App. #	App. #	Title #	App. Date #	Priority #	Pub. #	Pub. Date	Action #
US	1356455	11,480,000 MATERIALS, INC.	Layer material removal methods and apparatus	08/01/2009	US 12/149,947	US 7,926,282 B2	05/05/2011	
US	1356455	11,480,000 MATERIALS, INC.	LAYER MATERIAL REMOVAL METHODS AND APPARATUS	08/01/2009	US 12/149,947	US 7,926,282 B2	05/05/2011	
JP	201108719	11,480,000 MATERIALS, INC.	LAYER MATERIAL REMOVAL METHODS AND APPARATUS	08/01/2009	US 12/149,947	JP 201108719 A	08/05/2011	
US	1356455	11,480,000 MATERIALS, INC.	Layer material removal methods and apparatus	08/01/2009	US 12/149,947	US 7,926,282 B2	05/05/2011	
JP	201108719	11,480,000 MATERIALS, INC.	LAYER MATERIAL REMOVAL METHODS AND APPARATUS	08/01/2009	US 12/149,947	JP 201108719 A	08/05/2011	
US	1356455	11,480,000 MATERIALS, INC.	LAYER MATERIAL REMOVAL METHODS AND APPARATUS	08/01/2009	US 12/149,947	US 7,926,282 B2	05/05/2011	
US	1356455	11,480,000 MATERIALS, INC.	LAYER MATERIAL REMOVAL METHODS AND APPARATUS	08/01/2009	US 12/149,947	US 7,926,282 B2	05/05/2011	
US	1356455	11,480,000 MATERIALS, INC.	LAYER MATERIAL REMOVAL METHODS AND APPARATUS	08/01/2009	US 12/149,947	US 7,926,282 B2	05/05/2011	

Office Action Indicator

Application dossier view

Global Dossier

Application Number: EP 09811971

Documents:

- JP 2011525114
- CN 200980133793
- KR 20117006576
- US 12545488
- PCT/US09/54677
- EP 09811971
- CN 201310590403
- US 13565455

Download document list

Application

- CSV format
- PDF format

of renewal fee)

European Patent Office
ROOM MUNICH
GERMANY

Zimmermann & Partner
Postfach 330 820
80369 München
ALLEMAGNE

Date: 14-04-2014

15879 EP
Application No. Patent No.
09811971 2 - 17102 / 2329518

Applicant/Inventor
Applied Materials, Inc.

Noting of loss of rights pursuant to Rule 112(1) EPC
The European Patent application is deemed to be withdrawn under Article 86(1) EPC.
The renewal fee for the 05. year and the additional fee have not been paid in due time / not been paid in full in due time.

Means of redress

13

Citation list – expanded view

Global Dossier Citation List

Office: US Type: Application 12344567

US 12344567 SYSTEM AND METHOD OF SWITCHING FROM... VIEW PATENT FAMILY

Filters

19 Total Citations
19 Currently Shown

CITATION TYPE

- All IPS Offices: 19
- EP: 0
- JP: 4
- KR: 1
- CN: 0
- US: 14
- Non-IPS Offices: 0
- Non Patent Literature: 0

CITATIONS IN PATENT FAMILY

#	OFF.	APP. #	APP. DATE	PUB. NUMBER (DATE)	RELEVANCY DATA
1	US	2002048974/A1	04/25/2002	Methods for creating a customized program from a variety of sour...	View
2	US	20070174866/A1	07/26/2007	RULE-BASED PLAYLIST ENGINE AOL LLC	View
3	JP	2007066472/A	03/15/2007	NETWORK PLAYER FOR MEDIA, CONTROL METHOD AND PROGR... KENWOOD CORP	View
4	US	20080139189/A1	06/12/2008	LOCAL MEDIA CACHE WITH LEADER FILES SONY ERICSSON MOBILE COMM AB	View
1	US	PCT/US09/65917	11/25/2009	W/O 2010074880 A1 EP (07/01/2010)	Section: paragraph 4; paragraph 6; paragraph 57 - paragraph 58 Claims: 1-2,6-7,11-12,16-17,3-5,8-10,13-15,18-21,28,35,42 Claims: 1-2,6-7,11-12,16-17,3-5,8-10,13-15,18-21,28,35,42
2	KR	20117017637	11/25/2009	KR 20110097739 A EP (09/08/2011) KR 101367043 B1 EP (02/24/2014)	

14

Additional data provision tools

Assignment search

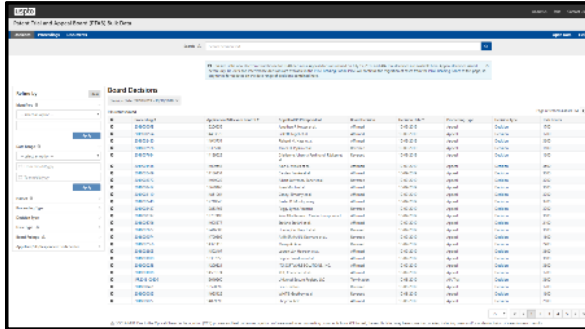
The screenshot shows the 'Patent Assignment Search' web application. It features a search bar with the text 'detroit' and a search button. Below the search bar are filter options for 'Filter by' including Assignee Name, Invention Class, and Country. A table of search results is displayed, with columns for Result #, Creation date, Assignment Type, Assignee (Client), Patent, and Publication. The table shows 10 results, with the first one being 'ASSIGNMENT OF ASSIGNOR INTEREST TO OWNER FOR DETAILS' for '385663424' on '04/7/2014'.

User interface

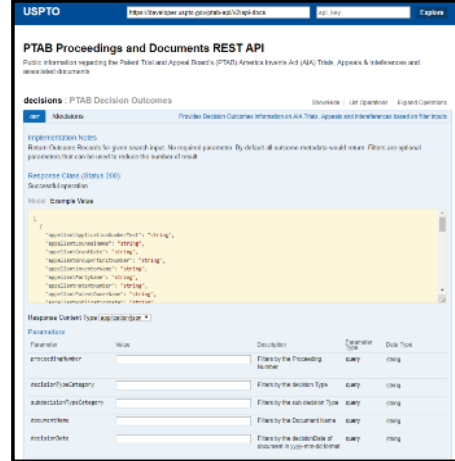
The screenshot shows the 'API Services for Patent Assignment Search' page. It includes a section for 'Services to provide Patent Assignment Search' and a 'quicklookup' endpoint. The endpoint is described as 'Perform a quick lookup.' and has a URL of '/patentlookup'. Below this, there is a 'Response Class (Status 200)' section showing a JSON response structure with fields like 'id', 'title', 'abstract', and 'inventor'. At the bottom, there is a 'Parameters' section with input fields for 'query' and 'filter'.

API Access

Patent Trial and Appeal Board bulk data



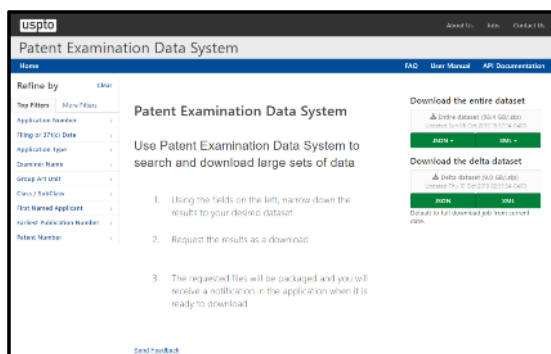
User interface



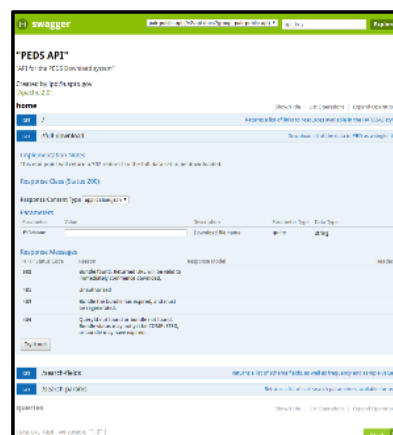
API service

17

Patent examination data



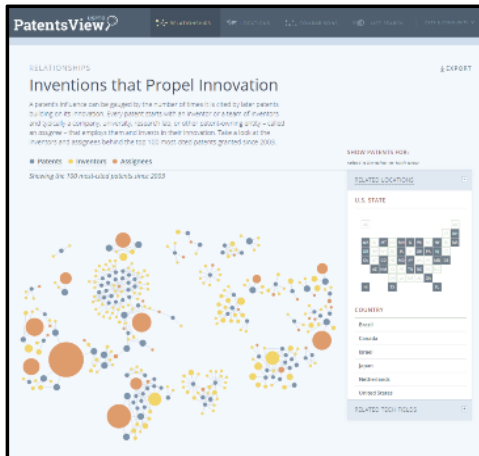
User interface



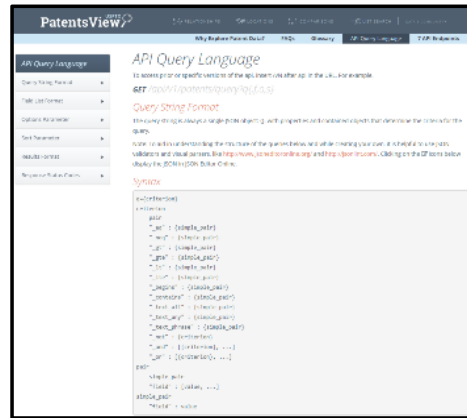
API Access

18

PatentsView



User interface



API Access

19

Contact information

Electronic Business Center

Hours: Monday to Friday, 6 a.m. to midnight ET, except federal holidays

Telephone numbers:

- Toll-free: 866-217-9197
- Local: 571-272-4100

Email: ebc@uspto.gov

Global Dossier

Email: GlobalDossier@uspto.gov

Assignment search

<https://assignments.uspto.gov>

PTAB bulk data

<https://assignments.uspto.gov>

Patent examination data

<https://ped.uspto.gov/peds/>

PatentsView

www.patentsview.org



20

